

NACKA STRAND  
BTA HUS 15  
STOCKHOLM 20150319

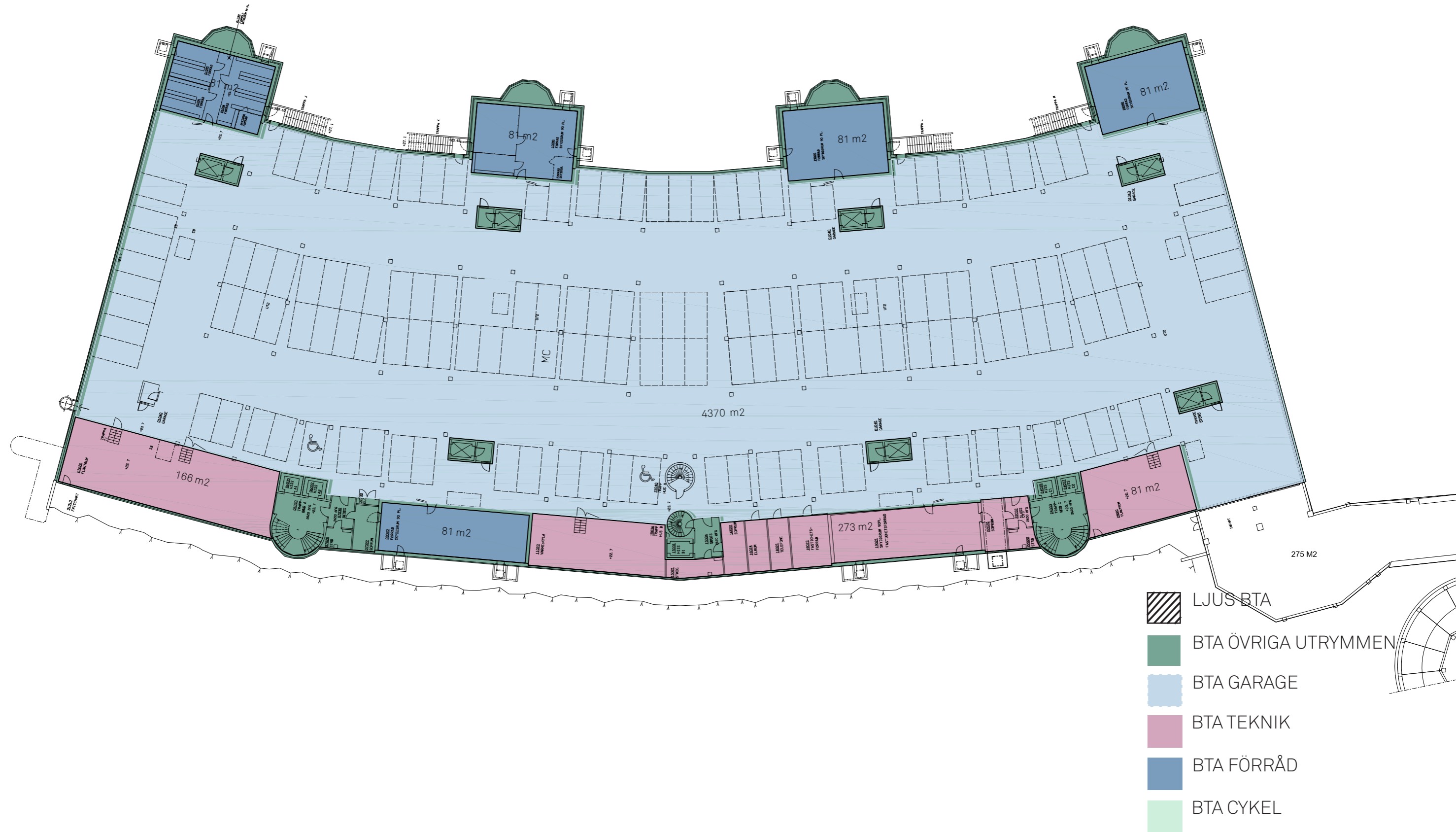
**BSK A**

**Hus 15**

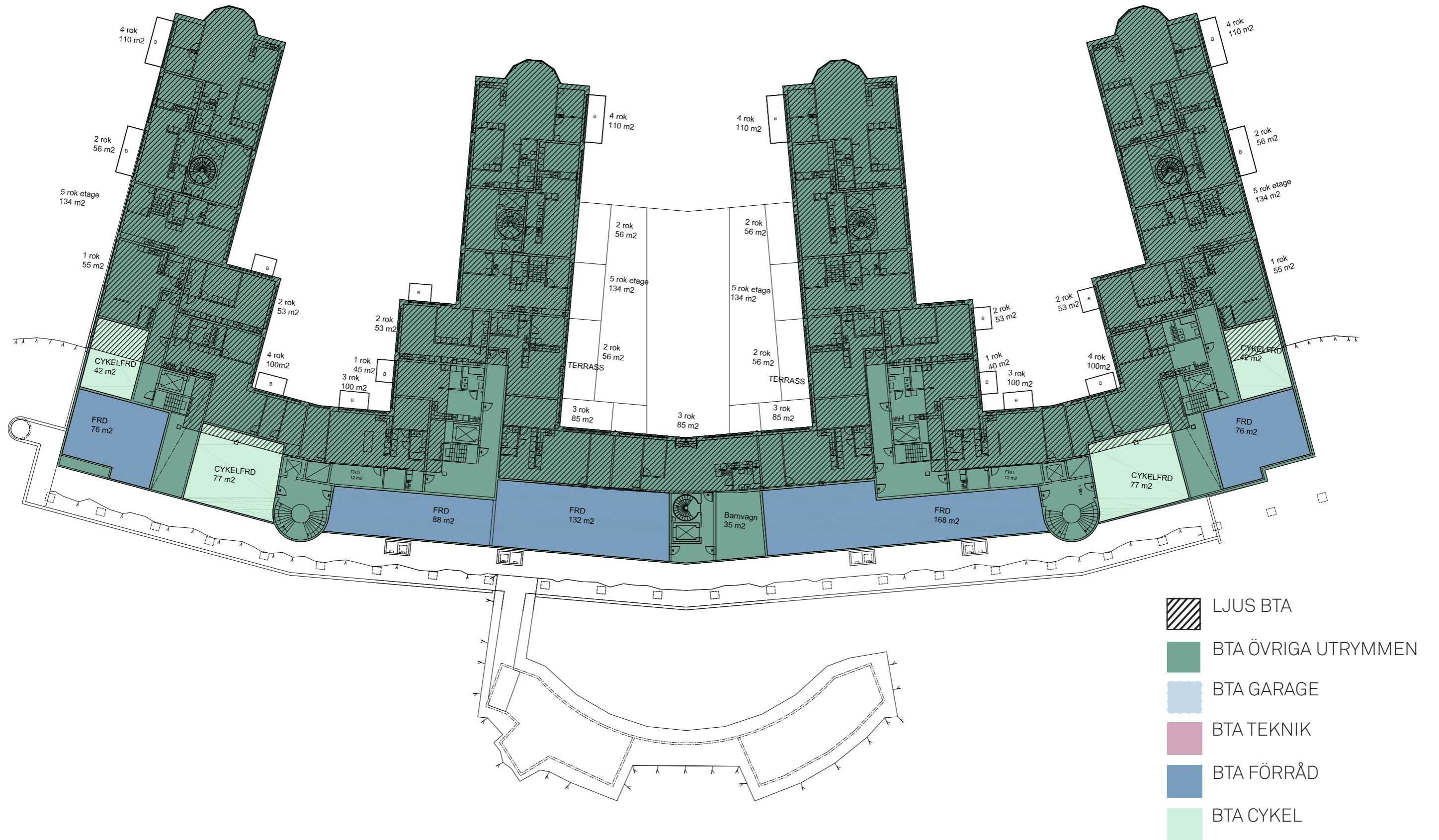
Våning	Total BTA	BTA Förråd	BTA Cykel	BTA Teknik	BTA Garage	BTA Övriga utrymmen	Ljus BTA
1	5803	405		519	4370	509	
2	4289	974				3315	2116
3	3969	599	238			3132	2555
4	3891					3891	3891
5	4065					4065	4065
6	4234					4234	4234
7	3527					3527	3527
8	1648					1648	1648
<b>Summa</b>	<b>31426</b>	<b>1978</b>	<b>238</b>	<b>519</b>	<b>4370</b>	<b>24321</b>	<b>22036</b>






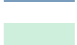
**Totalt BTA Hus 15**      **31426**      **Tunnelbaneavgift**      **26818**

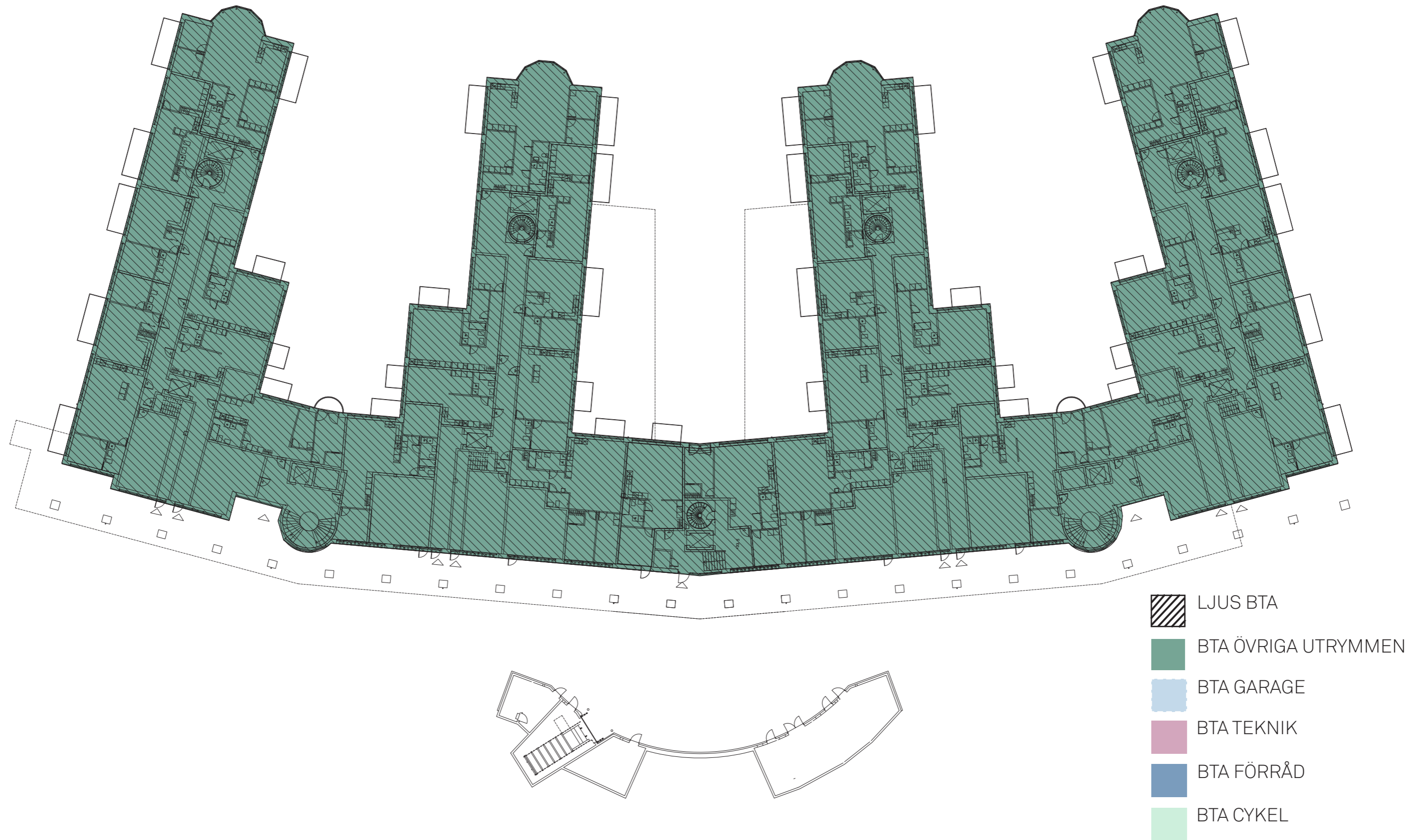
-  LJUS BTA
-  BTA ÖVRIGA UTRYMMEN
-  BTA GARAGE
-  BTA TEKNIK
-  BTA FÖRRÅD
-  BTA CYKEL

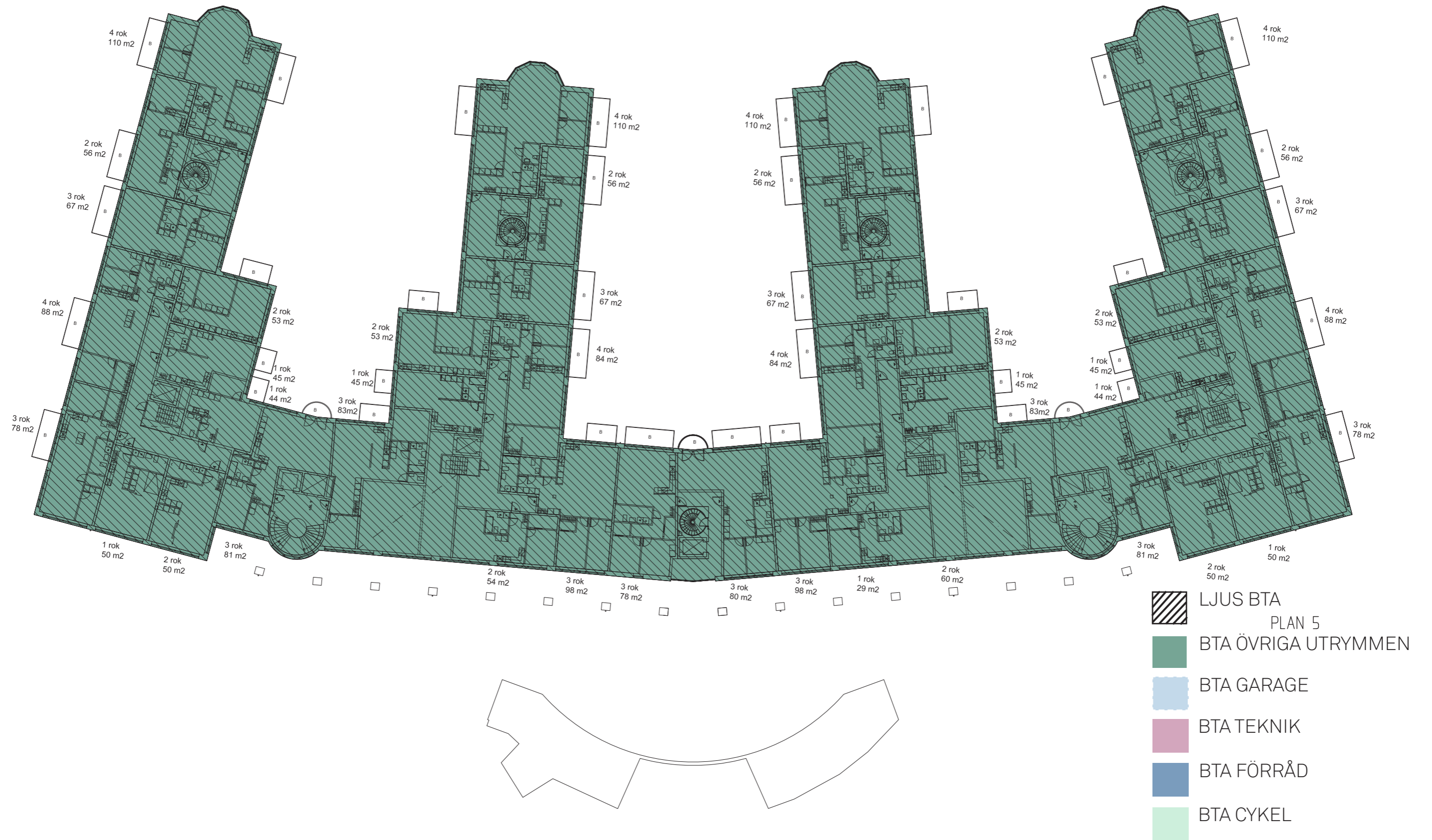


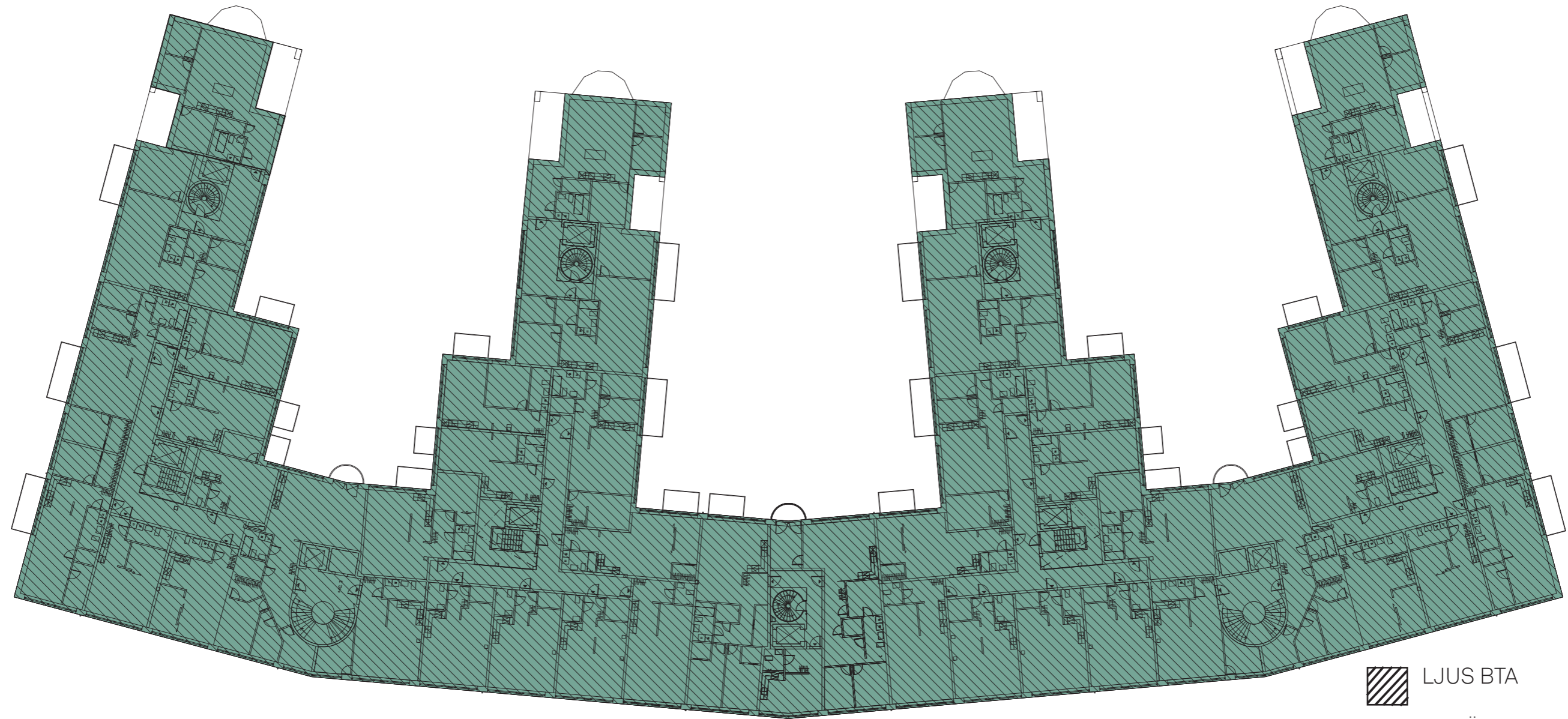










-  LJUS BTA
-  BTA ÖVRIGA UTRYMMEN
-  BTA GARAGE
-  BTA TEKNIK
-  BTA FÖRRÅD
-  BTA CYKEL

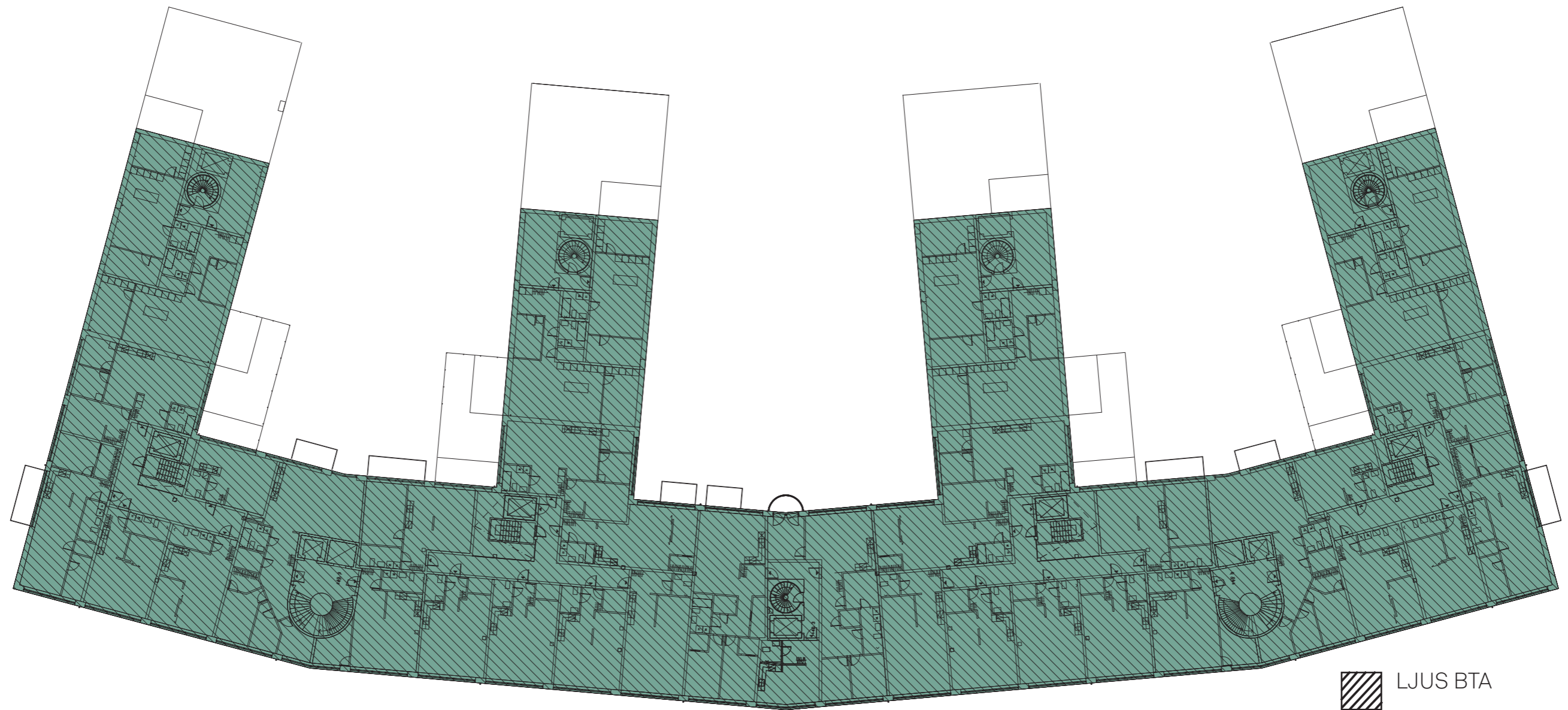










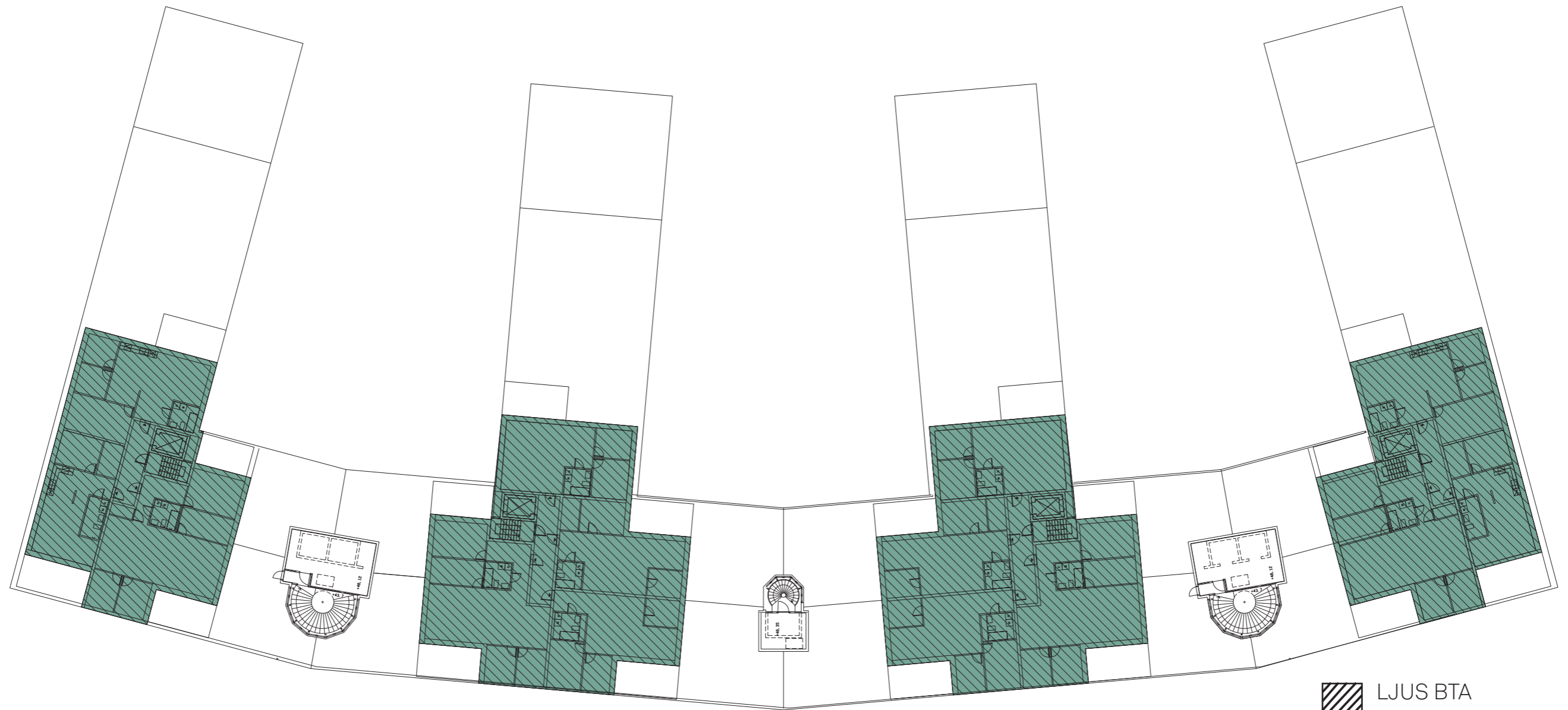








-  LJUS BTA
-  BTA ÖVRIGA UTRYMMEN
-  BTA GARAGE
-  BTA TEKNIK
-  BTA FÖRRÅD
-  BTA CYKEL





-  LJUS BTA
-  BTA ÖVRIGA UTRYMMEN
-  BTA GARAGE
-  BTA TEKNIK
-  BTA FÖRRÅD
-  BTA CYKEL



-  LJUS BTA
-  BTA ÖVRIGA UTRYMMEN
-  BTA GARAGE
-  BTA TEKNIK
-  BTA FÖRRÅD
-  BTA CYKEL